



Introduction

Japanese artists working in the early 20th century (i.e., 1900-1930s) drew birds in a much more realistic way than did their predecessors. For example, both the shape and coloring of the pair of Eurasian tree sparrows (*Passer montanus*) drawn by the early 20th century's most prolific bird artist (i.e., Koson Ohara) in picture 1 were more true-to-life than in picture 2 drawn by Koson's early 19th century counterpart (i.e., Hiroshige Utagawa). Making birds look more lifelike reflected the increased influence of realistic European art on early 20th century Japanese artists. At that time Japan was undergoing a process of modernization and the adoption of the more realistic European style of art was part of that process. Koson was only one of many Japanese artists whose art blended European realism with traditional Japanese idealism. The work of twenty-five of these artists is included in this virtual exhibition. A representative example of each artist's work was chosen from bird prints in the Reader Collection of Japanese Art which includes more than one thousand early 20th century Japanese bird prints. The twenty-five artists are arranged by their total bird print production, starting with the most productive artist Koson Ohara.

Additional Reading

Newland, Amy Reigle, Perrée, Jan and Schaap, Robert. 2001. Crows, Cranes and Camellias, the Natural World of Ohara Koson 1877-1945. Hotei Publishing, Leiden.



Picture 1 by Koson Ohara



Picture 2 by Hiroshige Utagawa

1 Black-billed magpie (*Pica pica*)
by **Koson Ohara**, 190 x 355 mm



2 Mandarin duck (*Aix galericulata*) by Rakusan Tsuchiya, 615 x 470 mm



(冬) 喜鹊白花茶山

3 Mallard duck (*Anas platyrhynchos*)
by Shōun Yamamoto, 190 x 365 mm



4 White-backed woodpecker
(*Drycopos leucotos*) by **Gessō**
Yoshimoto, 125 x 250 mm



5 Java sparrow (*Padda oryzivora*)
by **Sōzan Itō**, 170 x 380 mm



6 Crow (*Corvus* sp.) by Shōtei Takahashi, 185 x 125 mm



7 Japanese quail (*Coturnix japonica*) by Kōgyo Tsukioka, 275 x 275 mm



8 Japanese quail (*Coturnix japonica*) by Gekkō Ogata, 250 x 250 mm



9 Golden eagle (*Aquila chrysaetos*) by **Kōitsu Tsuchiya**,
195 x 390 mm



10 Hawk (*Accipiter* sp.) by Suikō
Fukuda, 275 x 400 mm



11 Common kingfisher (*Alcedo atthis*) by **Bihō Takahashi**, 240 x 265 mm



12 Olive-backed pipit (*Anthus hodgsoni*)
by Gyōsui, 125 x 245 mm



13 Domestic fowl (*Gallus gallus*)
by Kakō Tsuji, 195 x 365 mm



14 Domestic fowl (*Gallus gallus*)
by **Kōhō Shoda**, 80 x 340 mm



15 Cockatoo (*Cacatua* sp.) by
Hodō Nishimura, 275 x 395 mm



16 Blue-and-white flycatcher (*Cyanoptila cyanomelana*) by **Chikuseki Yamamoto**, 250 x 240 mm



17 Common moorhen (*Gallinula chloropus*) by **Soseki Komori**, 215 x 390 mm



18 Japanese bush-warbler (*Cettia diphone*) by Jō, 195 x 400 mm



19 Green pheasant (*Phasianus versicolor*) by Benji Asada, 450 x 295 mm



20 Green pheasant (*Phasianus versicolor*) by **Suian Hirafuku**, 235 x 230 mm



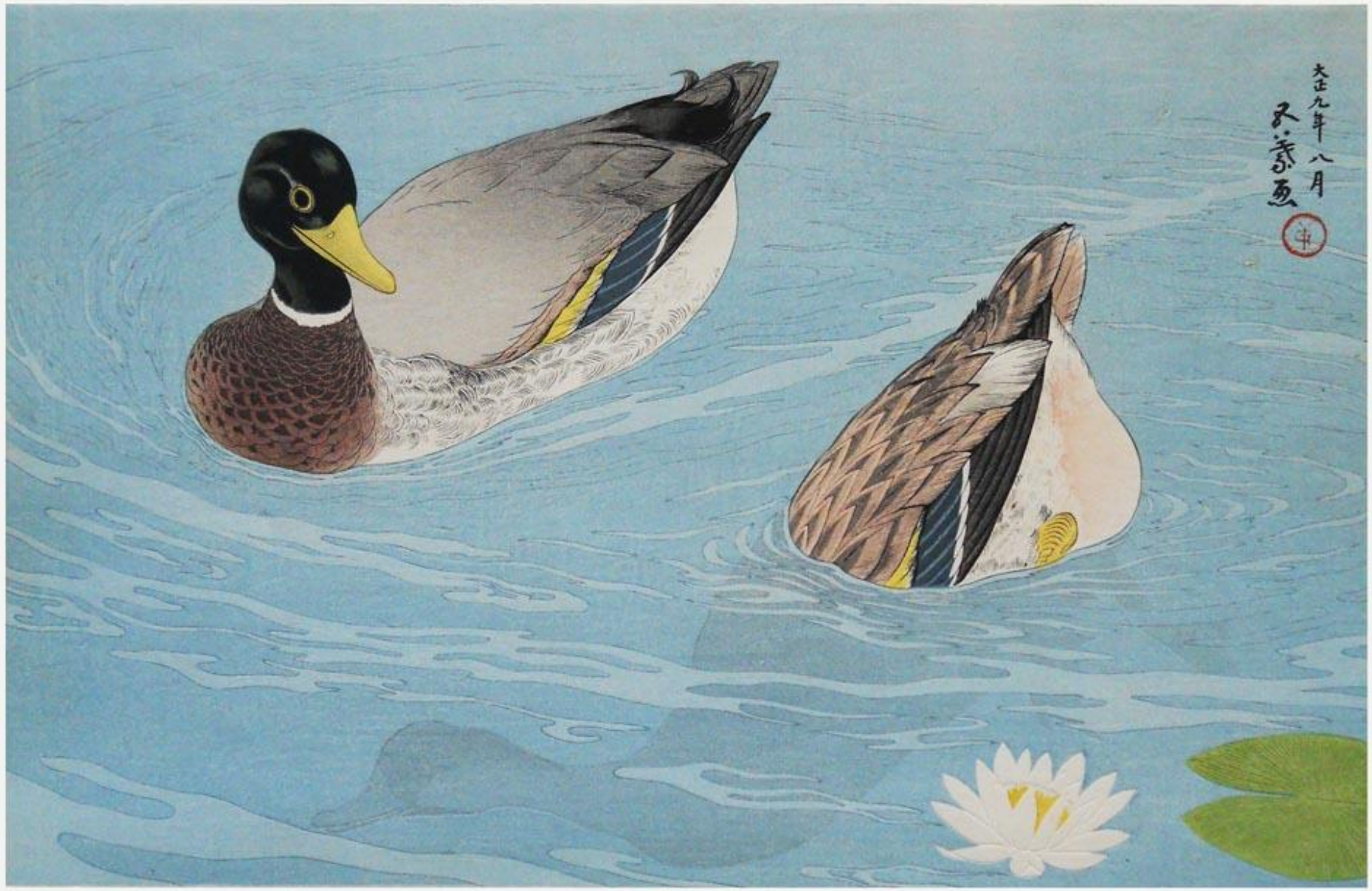
21 Red-crowned crane (*Grus japonensis*) by Nisaburō Itō, 270 x 300 mm



22 Mallard duck (*Anas platyrhynchos*) by Hasui Kawase, 390 x 270 mm



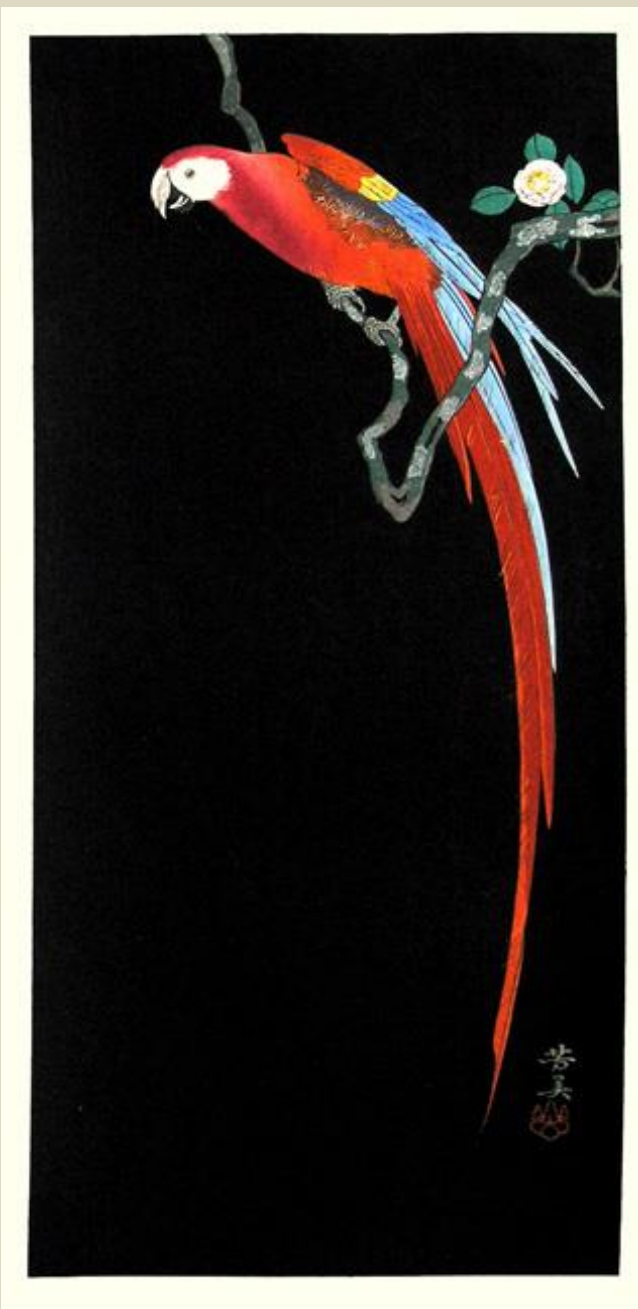
23 Mallard duck (*Anas platyrhynchos*) by Goyō Hashiguchi, 405 x 265 mm



24 Common kingfisher (*Alcedo atthis*) by **Fuyō Narazaki**, 175 x 395 mm



25 Scarlet macaw (*Ara macao*) by
Kōitsu Ishiwata, 250 x 510 mm



[Back to Exhibitions](#)